



**2017
MOTORBIKE
WINTER COLLECTION**

DAINESE

TABLE OF CONTENTS

2	LEATHER SUITS & JACKETS
8	GORE-TEX® JACKETS & PANTS
18	D-DRY® JACKETS & PANTS
28	SHOES
34	BOOTS
40	GLOVES
48	TECHNOLOGIES
56	SIZE CHART

2017
MOTORBIKE
WINTER COLLECTION

LEATHER SUITS & JACKETS

- 4 ASSEN 2PCS SUIT
- 5 ASSEN 2 PCS LADY SUIT
- 6 MUGELLO LEATHER JACKET

ASSEN 2PCS SUIT

PART NUMBER SIZES

(20)1513459 44 - 64
(20)1513460 - PERF.

The Assen is a two-piece performance suit that excels on track and road. Tutu cowhide leather integrates the increased protection of EN 1621.1 Level 2 armor throughout, including a new shoulder design with replaceable aluminum armor plates. The advanced comfort features include S1 bielastic fabric inserts for an agile ride. The result is reduced rider strain for increased concentration, performance and riding pleasure.



ERGONOMICS

Aerodynamic spoiler
Calf zip
Collar with elasticated insert
Elasticated inserts
Elasticated fabric inserts

GENERAL FEATURES

Interchangeable knee sliders

MAIN MATERIALS

S1 bielastic fabric
Tutu cowhide leather

SHOCK PERFORMANCE

10mm high resistant jacket-trousers connecting zipper

Composite protectors certified to EN 1621.1 standard Level 2 on elbows

Composite protectors certified to EN 1621.1 standard Level 2 on knees

Composite protectors certified to EN 1621.1 standard Level 2 on shoulders

Pro-Shape soft protectors certified to Standard EN 1621.1 on hips

Replaceable aluminum plate on shoulder

Suit certified to CE - Cat. II - Directive 89/686/EEC

Thermoformed shoulder covered with Tutu leather

TEMPERATURE REGULATION

Breathable Nanofeel® liner with Silver ion treatment

Localized perforation (only perforated version)

COLOR VERSIONS



I96
white/black/
fluoro-red



N32
black/white/
fluoro-red
PERFORATED



948
black/black/
white
PERFORATED



Q90
black/white/
fluoro-yellow

ASSEN 2 PCS LADY SUIT

PART NUMBER SIZES

(20)2513459 38 - 54

The Assen is a two-piece performance suit that excels on track and road. Tutu cowhide leather integrates the increased protection of EN 1621.1 Level 2 armor throughout, including a new shoulder design with replaceable aluminum armor plates. The advanced comfort features include S1 bielastic fabric inserts for an agile ride. The result is reduced rider strain for increased concentration, performance and riding pleasure.



ERGONOMICS

Aerodynamic spoiler
Calf zip
Collar with elasticated insert
Elasticated inserts
Elasticated fabric inserts

GENERAL FEATURES

Interchangeable knee sliders

MAIN MATERIALS

S1 bielastic fabric
Tutu cowhide leather

SHOCK PERFORMANCE

10mm high resistant jacket-trousers connecting zipper

Composite protectors certified to EN 1621.1 standard Level 2 on elbows

Composite protectors certified to EN 1621.1 standard Level 2 on knees

Composite protectors certified to EN 1621.1 standard Level 2 on shoulders

Pro-Shape soft protectors certified to Standard EN 1621.1 on hips

Replaceable aluminum plate on shoulder

Suit certified to CE - Cat. II - Directive 89/686/EEC

Thermoformed shoulder covered with Tutu leather

TEMPERATURE REGULATION

Breathable Nanofeel® liner with Silver ion treatment

COLOR VERSIONS



948
black/black/
white



N32
black/white/
fluoro-red



I96
white/black/
fluoro-red

MUGELLO LEATHER JACKET

PART NUMBER SIZES

(20)1533794 44 - 64
(20)1533795 - PERF.

Engineered with Dainese MotoGP expertise, the Mugello Jacket brings enthusiasts a complete modular solution with the most advanced technologies on track or road. There are innovations you can see, like Slider System 2.0 quick-release elbow sliders and seamlessly-integrated dedicated armor - aluminum on the shoulders and titanium on the elbows. And then there are the hidden strengths of outstanding temperature regulation that give the rider added edge. While an aerodynamic spoiler and tri-axial elasticated back panel ensure razor-sharp precision and agile control. Choose Mugello to get it all, expressing your passion in champion form.



ERGONOMICS

Aerodynamic spoiler
Collar with elasticated insert
Elasticated inserts
Elasticated fabric inserts
Jacket-pants fastening system
Scooped back
Microelastic 2.0
Tri-axial elasticated insert on back
Adjustable waist

GENERAL FEATURES

2 inside pockets
2 outside pockets on front
Pocket for Double Chest protector
Pocket for G1 and G2 back protector
Reflective inserts
Replaceable Slider System 2.0:
quick-release elbow slider

MAIN MATERIALS

D-skin 2.0 full-grain cowhide leather
S1 bielastic fabric

SHOCK PERFORMANCE

Composite protectors certified to EN 1621.1 standard Level 2 on elbows
Composite protectors certified to EN 1621.1 standard Level 2 on shoulders
Jacket certified to CE - Cat. II - Directive 89/686/EEC
Seamless aluminum armor on shoulders
Seamless titanium armor on elbows
Semirigid panels with high abrasion resistance on back and sleeves

TEMPERATURE REGULATION

3D-Bubble fabric inserts
Air vents on sides
Breathable Nanofeel® liner with Silver ion treatment
Localized perforation



COLOR VERSIONS



N32
black/white/
fluo-red
PERFORATED

P75
black/black/
fluo-red

948
black/black/
white
PERFORATED

GORE-TEX® JACKETS & PANTS

- 10 CARVE MASTER 2 GORE-TEX® JACKET
- 11 CARVE MASTER 2 LADY GORE-TEX® JACKET
- 12 D-CYCLONE GORE-TEX® JACKET
- 13 D-EXPLORER GORE-TEX® JACKET
- 14 CARVE MASTER 2 GORE-TEX® PANTS
- 15 CARVE MASTER 2 LADY GORE-TEX® PANTS
- 16 D-CYCLONE GORE-TEX® PANTS
- 17 D-EXPLORER GORE-TEX® PANTS

CARVE MASTER 2 GORE-TEX® JACKET

PART NUMBER SIZES

(20)1593984 44 - 62*

*Special sizing chart: details at page 56

Dainese's Sport Touring leader taken to new heights with performance enhancements, increased storage pockets and heightened style. Joined by a women's model that's been totally reengineered for the female form, couples riding together can now look as good as they feel. Carve Master 2 puts you in total control, whatever the weather, with a breathable and waterproof GORE-TEX® membrane, multiple air vents and a new, upgraded removable thermal liner and thermal collar. 3D-Stone inserts at all critical points deliver class-leading abrasion resistance, while Mugello fabric combines outstanding comfort with unrestricted riding agility. So you can follow your instincts unhindered when the open road calls.



ERGONOMICS

Adjustable bottom drawstring
Jacket-pants fastening system
Sleeves adjustment
Waist adjustment
Adjustable cuffs

GENERAL FEATURES

1 cargo pocket on the back
1 pocket in thermal liner
2 inside pockets
2 waterproof outside front pockets
4 outside pockets
Pocket for Double Chest protector
Pocket for G1 and G2 back protector
Reflective inserts

MAIN MATERIALS

3D-Stone fabric
3D-Stone fabric inserts on elbows
Mugello fabric

SHOCK PERFORMANCE

Rigid PU rigid armor covered with high-strength 3D-Stone fabric on shoulders
Removable composite protectors certified to EN 1621.1 Standard on elbows
Removable composite protectors certified to EN 1621.1 Standard on shoulders

TEMPERATURE REGULATION

Air vents on chest and back
Air vents on sleeves
Breathable waterproof GORE-TEX® membrane
Water-resistant outer fabric
Front Idraflap fastener
Removable thermal collar
Removable thermal liner



COLOR VERSIONS



U41
black/ebony/
fluo-yellow

Y21
black/black/
ebony

Z03
black/frost-grey/
red

CARVE MASTER 2 LADY GORE-TEX® JACKET

PART NUMBER SIZES

(20)2593984 38 - 52*

*Special sizing chart: details at page 56

Dainese's Sport Touring leader taken to new heights with performance enhancements, increased storage pockets and heightened style. Joined by a women's model that's been totally reengineered for the female form, couples riding together can now look as good as they feel. Carve Master 2 puts you in total control, whatever the weather, with a breathable and waterproof GORE-TEX® membrane, multiple air vents and a new, upgraded removable thermal liner and thermal collar. 3D-Stone inserts at all critical points deliver class-leading abrasion resistance, while Mugello fabric combines outstanding comfort with unrestricted riding agility. So you can follow your instincts unhindered when the open road calls.



ERGONOMICS

Adjustable bottom drawstring
Jacket-pants fastening system
Sleeves adjustment
Waist adjustment
Adjustable cuffs

GENERAL FEATURES

1 cargo pocket on the back
1 pocket in thermal liner
2 inside pockets
2 waterproof outside front pockets
4 outside pockets
Pocket for Double Chest protector
Pocket for G1 and G2 back protector
Reflective inserts

MAIN MATERIALS

3D-Stone fabric
3D-Stone fabric inserts on elbows
Mugello fabric

SHOCK PERFORMANCE

Rigid PU rigid armor covered with high-strength 3D-Stone fabric on shoulders
Removable composite protectors certified to EN 1621.1 Standard on elbows
Removable composite protectors certified to EN 1621.1 Standard on shoulders

TEMPERATURE REGULATION

Air vents on chest and back
Air vents on sleeves
Breathable waterproof GORE-TEX® membrane
Water-resistant outer fabric
Front Idraflap fastener
Removable thermal collar
Removable thermal liner



COLOR VERSIONS



U41
black/ebony/
fluo-yellow

Y21
black/black/
ebony

Z03
black/frost-grey/
red

D-CYCLONE GORE-TEX® JACKET**PART NUMBER SIZES**

(20)1593983 44 - 62*

Dainese D-Cyclone jacket brings the best solutions for a Sport-Touring rider. Lightness, durability and ergonomics given by the laminated GORE-TEX® 2L membrane & elasticated fabric. There are coated air vents at the chest and back, and a CE-certified Wave G2 back protector is included.

*Special sizing chart: details at page 56

**ERGONOMICS**

Anti-floating sleeve adjustment
Hips adjustment
Elasticated fabric inserts
Jacket-pants fastening system
Waist, neck and Wrist adjustment

GENERAL FEATURES

2 inner waterproof pockets
3 outside front pockets
(2 waterproof)
Pocket for Double Chest protector
Pocket for G1 and G2 back protector
Wave G2 back protector included
Reflective inserts

MAIN MATERIALS

Cowhide leather inserts
Laminated GORE-TEX® fabric

SHOCK PERFORMANCE

Back protector Wave G2 certified to CE - Cat. II - EN 1621.2 included
Polyurethane rigid shoulders covered with cowhide leather
Removable composite protectors certified to EN 1621.1 Standard

TEMPERATURE REGULATION

Air vents on chest and back
Removable inner collar
Removable thermal liner
Waterproof 2L GORE-TEX® membrane

COLOR VERSIONS

N49
black/black/
fluo-yellow
new color option

D-EXPLORER GORE-TEX® JACKET**PART NUMBER SIZES**

(20)1593961 44 - 64

This modular jacket in GORE-TEX® is the best in its category thanks to the innovative technical solutions and excellent materials used. Made from resistant, elasticised Mugello and Quick Dry fabrics with elasticised strategically placed inserts. The numerous adjustments mean that the jacket can adapt better to the wearer's body and offer superb freedom of movement. The D-Explorer comes with a removable, breathable, waterproof GORE-TEX® membrane and with a removable thermal lining which, along with the "Dainese modular flap system" on the chest and back, make this jacket perfect, whatever the weather. Furthermore this jacket has been designed to accommodate the "Double Chest" protector, and a G1 or G2 back protector is included. Numerous inner and outside pockets complete this versatile jacket.

ERGONOMICS

Anti-floating sleeve adjustment
Adjustable bottom drawstring
Elasticated inserts
Gaiter on sleeve bottom
Jacket-pants fastening system
Neck adjustment
Waist adjustment
Adjustable cuffs

GENERAL FEATURES

1 pocket on inner liner
1 pocket on left strip
1 pocket in thermal liner
1 pocket on waterproof liner
2 front outside pockets
2 rear pockets
2 waterproof outside front pockets
Pocket for documents on sleeve
Pocket for Double Chest protector
Reflective inserts

MAIN MATERIALS

Duratex fabric
Mesh fabric
Mugello fabric
QuickDry fabric

SHOCK PERFORMANCE

Back protector Wave G2 certified to CE - Cat. II - EN 1621.2 included
Removable composite protectors certified to EN 1621.1 Standard
Thermoformed shoulders covered in D-Stone™ fabric

TEMPERATURE REGULATION

Air vents on sleeves
Dainese modular flap system on chest and back
Water-resistant outer fabric
Perforated breathable Sanitized® fabric liner
Removable liner with breathable waterproof GORE-TEX® membrane
Removable thermal liner

**COLOR VERSIONS**

606
black/red
new color option

CARVE MASTER 2 GORE-TEX® PANTS

PART NUMBER	SIZES	
(20)1614068*	44 - 62	The perfect partner for the Carve Master 2 jacket, complementing and completing its safety functions, all-season temperature regulation and streamlined, sports touring looks.

*Special sizing chart: details at page 56



ERGONOMICS

- Adjustable knee protector height
- Calf adjustment straps
- Calf zip
- Adjustable elasticated waist
- Jacket-pants fastening system

GENERAL FEATURES

- Reflective inserts

MAIN MATERIALS

- 3D-Stone fabric
- Mugello fabric

SHOCK PERFORMANCE

- Pro-Shape soft protectors certified to Standard EN 1621.1 on hips
- Removable composite protectors certified to EN 1621.1 Standard on knees

TEMPERATURE REGULATION

- Air vents on thighs
- Water-resistant outer fabric
- Perforated breathable Sanitized® fabric liner
- Removable thermal liner

COLOR VERSIONS



631
black/black

606
black/red

CARVE MASTER 2 LADY GORE-TEX® PANTS

PART NUMBER	SIZES	
(20)2614068*	38 - 52	The perfect partner for the Carve Master 2 jacket, complementing and completing its safety functions, all-season temperature regulation and streamlined, sports touring looks. The women's pants are not just along for the ride, having been designed and engineered in every aspect to provide a tailored fit and custom comfort for the female form.

*Special sizing chart: details at page 56



ERGONOMICS

- Adjustable knee protector height
- Calf adjustment straps
- Calf zip
- Adjustable elasticated waist
- Jacket-pants fastening system

GENERAL FEATURES

- Reflective inserts

MAIN MATERIALS

- 3D-Stone fabric
- Mugello fabric

SHOCK PERFORMANCE

- Pro-Shape soft protectors certified to Standard EN 1621.1 on hips
- Removable composite protectors certified to EN 1621.1 Standard on knees

TEMPERATURE REGULATION

- Air vents on thighs
- Water-resistant outer fabric
- Perforated breathable Sanitized® fabric liner
- Removable thermal liner

COLOR VERSIONS



631
black/black

606
black/red

D-CYCLONE GORE-TEX® PANTS

PART NUMBER SIZES

(20)1614067 44 - 62*

Designed to match the striking good looks and top-level sport touring performance of the D-Cyclone jacket, with fully-laminated GORE-TEX® 2L 600XK breathable waterproof fabric and GORE-TEX® 3L reinforcements on the knees and seat, plus cowhide leather inserts at critical points. Air vents on the thighs and a removable thermal lining give these light but tough modular pants all-year comfort.

*Special sizing chart: details at page 56



ERGONOMICS

Adjustable knee protector height
Calf adjustment straps
Calf zip
Adjustable elasticated waist
Elasticated fabric inserts
Jacket-pants fastening system

GENERAL FEATURES

2 front pockets
Pants attachments for suspenders kit (cod. 1999937)
Reflective inserts

MAIN MATERIALS

Cowhide leather inserts
Laminated GORE-TEX® 2L SPL 600XK fabric

COLOR VERSIONS

SHOCK PERFORMANCE

Pro-Shape soft protectors certified to Standard EN 1621.1 on hips
Removable composite protectors certified to EN 1621.1 Standard on knees

TEMPERATURE REGULATION

Air vents on thighs
Breathable waterproof 2L GORE-TEX® membrane
Breathable waterproof 3L GORE-TEX® reinforcements on knees and backside
Perforated breathable Sanitized® fabric liner
Removable thermal liner



631
black/black

D-EXPLORER GORE-TEX® PANTS

PART NUMBER SIZES

(20)1614055 44 - 64

Pants made from high resistance elasticised Mugello and Quickdry fabrics, P. D-Explorer GORE-TEX® pants are ideal for long rides. Elasticised fabric and inserts at the base of the spine and at the knees provide exceptional comfort in the saddle while these pants are also waterproof and feature the innovative removable thermal lining "Modular Flap" ventilation and temperature control system at the thighs as well as the removable, waterproof, breathable GORE-TEX® lining. P. D-Explorer pants were designed to match the D-Explorer jacket and also come with soft, certified Pro-Shape protectors, reflective inserts and can be worn with the braces/pants kit.



ERGONOMICS

Adjustable knee protector height
Calf zip
Elasticated fabric
Elasticated inserts
Jacket-pants fastening system
Adjustable waist

GENERAL FEATURES

2 outside pockets
Predisposed to be connected with pants suspender kit (cod. 1999937)
Reflective inserts

MAIN MATERIALS

Duratex fabric
Mesh fabric
Mugello fabric
QuickDry fabric

COLOR VERSIONS

SHOCK PERFORMANCE

Pro-Shape soft protectors certified to Standard EN 1621.1 on hips
Removable composite protectors certified to EN 1621.1 Standard on knees

TEMPERATURE REGULATION

Dainese modular flap system on tights
Water-resistant outer fabric
Perforated breathable Sanitized® fabric liner
Removable liner with breathable waterproof GORE-TEX® membrane
Removable thermal liner



606
black/red
new color option

D-DRY® JACKETS E PANTS

20	RAIN MASTER D-DRY® JACKET
21	RAIN MASTER LADY D-DRY® JACKET
22	SUPER RIDER D-DRY® JACKET
23	D-BLIZZARD D-DRY® JACKET
24	BRISTOL D-DRY® JACKET
25	URBAN D-DRY® JACKET
26	HIGHSTREET D-DRY® JACKET
27	HIGHSTREET LADY D-DRY® JACKET

RAIN MASTER D-DRY® JACKET

PART NUMBER **SIZES**

(20)1654604 44 - 62*

*Special sizing chart: details at page 56

Touring with an adrenaline rush. Light and flexible elasticated Mugello fabric for comfort, agility and total control on the road. Tough cowhide protection where you need it. The technology to cope with any conditions, including a D-Dry® breathable waterproof membrane, a removable thermal liner and air vents on the chest and back for through-flow comfort. That's the Rain Master, a tough sport touring jacket that's surprisingly practical, with multiple pockets - including rear cargo stowage - and all the modular options you could want for a complete custom touring solution.



ERGONOMICS

- Elasticated fabric
- Jacket-pants fastening system
- Microelastic 2.0
- Neck adjustment
- Sleeves adjustment
- Waist adjustment
- Adjustable cuffs

GENERAL FEATURES

- 1 cargo pocket on the back
- 2 inside pockets
- 2 outside pockets on front
- Pocket for Double Chest protector
- Pocket for G1 and G2 back protector
- Reflective inserts

MAIN MATERIALS

- Cowhide leather
- Mugello fabric

SHOCK PERFORMANCE

- Cowhide leather inserts on elbows
- Rigid PU rigid armor covered with cowhide leather on shoulders
- Removable composite protectors certified to EN 1621.1 Standard on elbows
- Removable composite protectors certified to EN 1621.1 Standard on shoulders

TEMPERATURE REGULATION

- Air vents on chest and back
- Breathable waterproof D-Dry® membrane
- Front Idraflap fastener
- Perforated breathable Sanitized® fabric liner
- Removable thermal liner

COLOR VERSIONS



Y22
black/glacier gray/
red

Z02
black/glacier gray/
fluo-yellow

691
black/black/
black

RAIN MASTER LADY D-DRY® JACKET

PART NUMBER **SIZES**

(20)2654604 38 - 52*

*Special sizing chart: details at page 56

Touring with an adrenaline rush. Light and flexible elasticated Mugello fabric for comfort, agility and total control on the road. Tough cowhide protection where you need it. The technology to cope with any conditions, including a D-Dry® breathable waterproof membrane, a removable thermal liner and air vents on the chest and back for through-flow comfort. That's the Rain Master, a tough sport touring jacket that's surprisingly practical, with multiple pockets - including rear cargo stowage - and all the modular options you could want for a complete custom touring solution.



ERGONOMICS

- Elasticated fabric
- Jacket-pants fastening system
- Microelastic 2.0
- Neck adjustment
- Sleeves adjustment
- Waist adjustment
- Adjustable cuffs

GENERAL FEATURES

- 1 cargo pocket on the back
- 2 inside pockets
- 2 outside pockets on front
- Pocket for Double Chest protector
- Pocket for G1 and G2 back protector
- Reflective inserts

MAIN MATERIALS

- Cowhide leather
- Mugello fabric

SHOCK PERFORMANCE

- Cowhide leather inserts on elbows
- Rigid PU rigid armor covered with cowhide leather on shoulders
- Removable composite protectors certified to EN 1621.1 Standard on elbows
- Removable composite protectors certified to EN 1621.1 Standard on shoulders

TEMPERATURE REGULATION

- Air vents on chest and back
- Breathable waterproof D-Dry® membrane
- Front Idraflap fastener
- Perforated breathable Sanitized® fabric liner
- Removable thermal liner

COLOR VERSIONS



691
black/black/
black

Y22
black/glacier gray/
red

Z02
black/glacier gray/
fluo-yellow

SUPER RIDER D-DRY® JACKET

PART NUMBER SIZES

(20)1654592 44 - 60

The lightweight Super Rider D-Dry® has an aggressive design inspired by premium leather sport-bike jackets. Features include cowhide inserts, aluminum plates on the shoulders, Mugello bi-elastic fabric and huge mesh panels. Completing the technical aspects are an aerodynamic hump and a removable D-Dry® waterproof liner for maximum versatility.



ERGONOMICS

Aerodynamic spoiler
Elasticated inserts
Jacket-pants fastening system
Microelastic elastically inserts
Neck adjustment
Wrists and Waist adjustments

GENERAL FEATURES

2 outside pockets
2 waterproof inside pockets
Pocket for Double Chest protector
Pocket for G1 and G2 back protector
Reflective inserts
Soft inserts

MAIN MATERIALS

Cowhide leather inserts
Mesh fabric inserts
Mugello fabric

SHOCK PERFORMANCE

Aluminium inserts on shoulders
Removable composite protectors certified to EN 1621.1 Standard

TEMPERATURE REGULATION

Water-resistant outer fabric
Perforated breathable Sanitized® fabric liner
Removable light thermal liner with breathable waterproof D-Dry® membrane

COLOR VERSIONS



N49
black/black/
fluo-yellow
new color option

D-BLIZZARD D-DRY® JACKET

PART NUMBER SIZES

(20)1654595 44 - 62*

Dainese's D-Blizzard jacket has been developed for long-range touring, with lightweight laminated D-Dry® membrane to keep out the elements. With a removable thermal collar liner and coated, direct-to-body air vents at the chest and back, the D-Blizzard is ready for any temperature.



ERGONOMICS

Jacket-pants fastening system
Neck, Hips, Wrists and Waist adjustments
Anti-floating sleeve adjustment

GENERAL FEATURES

3 outside front pockets
(2 waterproof)
1 pocket on the back
3 inside pockets
Reflective inserts
Pocket for G1 and G2 back protector
Pocket for Double Chest protector

MAIN MATERIALS

D-Synth 310L laminated with D-Dry® waterproof & breathable membrane
High resistance fabric inserts on shoulders and elbows

SHOCK PERFORMANCE

Removable composite protectors certified to EN 1621.1 standard
Polyurethane rigid shoulder covered with high resistant fabric

TEMPERATURE REGULATION

Breathable waterproof laminated D-Dry® membrane
Removable thermal liner
Removable inner warm collar
Coated direct air vents on chest and back

COLOR VERSIONS



N49
black/black/
fluo-yellow
new color option

BRISTOL D-DRY® JACKET

PART NUMBER	SIZES	
(20)1654606	44 - 64	The timeless Dainese four-pocket jacket reinvented for the experienced rider, with full Pro Armor protection and a new breathable waterproof D-Dry® membrane laminate shell with a hydrostatic head rating of 20,000 mm. A complete array of thoroughly modern features mean this classic is always in its element, from downtown nights to early-morning blasts down curving country roads.



ERGONOMICS

- Twin zipper hip adjustment
- Adjustable neck, waist and cuffs
- Adjustable waist belt

GENERAL FEATURES

- 4 pockets on front
- 1 inner waterproof pocket
- Smartphone waterproof pocket
- Earphone support
- 1 pocket on thermal liner
- Pocket for back protector
- Reflective inserts, can be hidden

MAIN MATERIALS

- Breathable and waterproof (20.000mm)
- D-Dry® Membrane laminated shell
- Motegi fabric

SHOCK PERFORMANCE

- Pro Armor elbow pads
- Pro Armor shoulder pads
- Ready for Pro Armor back protector

TEMPERATURE REGULATION

- Front Idraflap fastener
- Removable thermal liner

COLOR VERSIONS



001
black

Z01
uniform blue

URBAN D-DRY® JACKET

PART NUMBER	SIZES	
(20)1654608	44 - 64	Whatever life throws at you commuting, it's never been easier to meet the challenge in style. Combining a sleek short cut with modern materials and features - including full Pro Armor protection and a new breathable waterproof D-Dry® membrane laminate shell with a hydrostatic head rating of 20,000mm - this practical city jacket ensures you can always give your best.



ERGONOMICS

- Adjustable jacket bottom
- Adjustable cuffs

GENERAL FEATURES

- 3 pockets on front
- 1 inner waterproof pocket
- Smartphone waterproof pocket
- Earphone support
- 1 pocket on thermal liner
- Pocket for back protector
- Reflective inserts, can be hidden

MAIN MATERIALS

- Breathable and waterproof (20.000mm)
- D-Dry® Membrane laminated shell
- Motegi fabric

SHOCK PERFORMANCE

- Pro Armor elbow pads
- Pro Armor shoulder pads
- Ready for Pro Armor back protector

TEMPERATURE REGULATION

- Front Idraflap fastener
- Removable thermal liner

COLOR VERSIONS



001
black

Z01
uniform blue

HIGHSTREET D-DRY® JACKET

PART NUMBER **SIZES**

(20)1654607 44 - 64

Bold Italian style for the urban professional who never stands still. A fully-featured design combines embedded Pro Armor with stand-out good looks and the performance of a new breathable waterproof D-Dry® membrane laminate shell with a hydrostatic head rating of 20,000mm.



ERGONOMICS

- Twin zipper hip adjustment
- Adjustable waist belt
- Adjustable cuffs

GENERAL FEATURES

- 4 pockets on front
- 1 inner waterproof pocket
- Smartphone waterproof pocket
- Earphone support
- 1 pocket on thermal liner
- Pocket for back protector
- Reflective inserts, can be hidden

MAIN MATERIALS

- Breathable and waterproof (20,000mm)
- D-Dry® Membrane laminated shell
- Motegi fabric

SHOCK PERFORMANCE

- Pro Armor elbow pads
- Pro Armor shoulder pads
- Ready for Pro Armor back protector

TEMPERATURE REGULATION

- Front Idraflap fastener
- Removable thermal liner

COLOR VERSIONS



001
black

Z01
uniform blue

HIGHSTREET LADY D-DRY® JACKET

PART NUMBER **SIZES**

(20)2654607 38 - 54

For the urban professional, a thoroughly modern jacket that's engineered for form-fitting female comfort in bold Italian style. The fully-featured design combines embedded Pro Armor with stand-out good looks and the performance of a new breathable waterproof D-Dry® membrane laminate shell with a hydrostatic head rating of 20,000mm.



ERGONOMICS

- Twin zipper hip adjustment
- Adjustable neck, waist and cuffs
- Adjustable waist belt

GENERAL FEATURES

- 4 pockets on front
- 1 inner waterproof pocket
- Smartphone waterproof pocket
- Earphone support
- 1 pocket on thermal liner
- Pocket for back protector
- Reflective inserts, can be hidden

MAIN MATERIALS

- Breathable and waterproof (20,000mm)
- D-Dry® Membrane laminated shell
- Motegi fabric

SHOCK PERFORMANCE

- Pro Armor elbow pads
- Pro Armor shoulder pads
- Ready for Pro Armor back protector

TEMPERATURE REGULATION

- Front Idraflap fastener
- Removable thermal liner

COLOR VERSIONS



001
black

Z01
uniform blue

SHOES

- 30 STREET BIKER D-WP SHOES
- 31 STREET BIKER LADY D-WP SHOES
- 32 STREET ROCKER D-WP LADY SHOES

STREET ROCKER D-WP LADY SHOES

PART NUMBER	SIZES	
(20)2775198	36 - 42	Timeless casual comfort with a premium vintage feel, modern protection technology and a waterproof but breathable D-WP layer this boot's got them all. But best of all it's crafted especially for women's feet. Certified to CE - Cat. II - EN 13634 Standard, you'll feel ready for anything in this stylish stand-out design.



ERGONOMICS

Lace-up closure

GENERAL FEATURES

Reflective inserts
Rubber sole with differentiated design
Vintage effect - Handcrafted

MAIN MATERIALS

Full grain cowhide leather upper

SHOCK PERFORMANCE

Rigid inserts on ankles
Shoe certified to CE - Cat. II - EN 13634 Standard

TEMPERATURE REGULATION

Waterproof D-WP interior

COLOR VERSIONS



001
black

005
dark brown

STREET BIKER LADY D-WP SHOES

PART NUMBER	SIZES	
(20)2775093	36 - 42	Street Biker Lady D-WP shoes were designed for younger riders and are enhanced by small technical details which make them ideal for zipping through the city. The fit of these shoes was specifically developed for women and there are various feminine colours available which go perfectly with the suede uppers to provide an excellent combination of look and resistance. Street Biker Lady D-WP, CE - Category II - Directive 89/686/EEC certified boots also feature rigid inserts at the heels, reinforced insoles and reflective inserts which increase both active and passive safety. D-WP waterproof, breathable layer ensures comfort and versatility whatever the conditions.



ERGONOMICS

Lace-up closure

GENERAL FEATURES

Reflective inserts
Rubber sole with differentiated design

MAIN MATERIALS

Cowhide suede upper

SHOCK PERFORMANCE

Rigid inserts on ankles
Shoe certified to CE - Cat. II - Directive 89/686/EEC

TEMPERATURE REGULATION


Waterproof D-WP interior

COLOR VERSIONS



C59
carbon-dark/red
new color option

STREET BIKER D-WP SHOES

PART NUMBER	SIZES	
(20)1775167	39 - 46	 <p>D-WP Street Biker shoes were designed for younger riders and are enhanced by small technical details which make them ideal for zipping through the city. Their technical content also ensures they are CE - Category II certified. These suede cowhide shoes accommodate tough, highly resistant inserts and provide a perfect blend of fashion and resistance. They have nylon heel protectors and reflective inserts which enhance both active and passive safety factors. The D-WP waterproof, breathable layer also ensures comfort and versatility.</p>



ERGONOMICS

Lace-up closure

GENERAL FEATURES

Reflective inserts
Rubber sole with differentiated design

MAIN MATERIALS

Cowhide suede upper

SHOCK PERFORMANCE

Rigid inserts on ankles
Shoe certified to CE - Cat. II -
Directive 89/686/EEC

TEMPERATURE REGULATION

Waterproof D-WP interior

COLOR VERSIONS



C59
carbon-dark/red
new color option

BOOTS

- 36 NEXUS D-WP BOOTS
- 37 CENTAURI GORE-TEX® BOOTS
- 38 SOLARYS GORE-TEX® BOOTS
- 39 SOLARYS AIR BOOTS

NEXUS D-WP BOOTS

PART NUMBER	SIZES
-------------	-------

(20)1795211	39 - 47
-------------	---------

The same top-quality materials and outstanding sport touring protection of the Nexus with the addition of a D-WP waterproof layer so the weather can't dampen your spirits. Advanced design features make this hi-tech boot exceptionally comfortable, whether you're exploring on foot or eating the miles in the saddle.



ERGONOMICS

Rear zipper closure
Flexible joints for extra walking comfort

GENERAL FEATURES

Gear shifter guard
High grip TPU inserts
Setscrew wrench supplied

MAIN MATERIALS

D-Stone™ fabric
Rubber sole
Microfibre upper

SHOCK PERFORMANCE

Certified boots to CE - Cat. II - EN 13634 Standard
Nylon heel
Protective nylon inner hull
Reinforced nylon toe
Replaceable plastic slider (1999885 Stainless Steel Boot Slider Kit, 1996252 Plastic Slider Kit. 08)
Thermoplastic polyurethane shin inserts

TEMPERATURE REGULATION

Fixed 3D-Bubble liner air spaces
Waterproof D-WP interior

COLOR VERSIONS



604
black/anthracite

CENTAURI GORE-TEX® BOOTS

PART NUMBER	SIZES
-------------	-------

(20)1795217	39 - 47
-------------	---------

The most structured Touring boot in the Dainese collection, the Centauri is as tough and practical as its beefy good looks. Certified to CE - Cat. II and EN 13634, it combines a full-grain leather upper with GORE-TEX® membrane, ankle reinforcement, strengthened toe cap, thermoformed shin insert and padded top collar to bring you outstanding protection and comfort.



ERGONOMICS

Elasticated inserts
Ergonomic padded top collar

GENERAL FEATURES

Reflective inserts
Rubber sole with differentiated design
Soft inserts
TPU Gear shifter guard
Two adjustable metal buckles

MAIN MATERIALS

Full grain cowhide leather upper
Nylon ankle guard
Split leather inserts on the internal side

SHOCK PERFORMANCE

Certified boots to CE - Cat. II - EN 13634 Standard
Rigid inserts on ankles
Thermoformed shin insert
TPU ankle reinforcement (External)
TPU heel counter

TEMPERATURE REGULATION

Breathable waterproof GORE-TEX® membrane

COLOR VERSIONS



001
black

SOLARYS GORE-TEX® BOOTS

PART NUMBER	SIZES
-------------	-------

(20)1795218	39 - 50
-------------	---------

Solarys is the perfect choice for warm conditions and active pursuits, with GORE-TEX® Extended Comfort technology for durable waterproof protection. A light yet protective perforated design without insulation ensures extreme breathability and comfort. So you can keep your cool all-year-round in hot climates, come rain or shine. Comfortable three-season use in temperate zones. Certified to CE - Cat. II - EN 13634.



ERGONOMICS

- Zipper closure
- Elasticated inserts
- Micro-injection reinforcement

GENERAL FEATURES

- TPU gear shifter guard
- Reflective inserts
- Rubber sole with differentiated design
- Soft inserts

MAIN MATERIALS

- Breathable fabric
- Microfibre upper

SHOCK PERFORMANCE

- Certified boots to CE - Cat. II - EN 13634 Standard
- Rigid shin insert
- Rigid inserts on ankles
- TPU ankle reinforcement (External)

TEMPERATURE REGULATION

- GORE-TEX® Extended Comfort technology for optimal breathability
- Perforated upper

COLOR VERSIONS



001
black

SOLARYS AIR BOOTS

PART NUMBER	SIZES
-------------	-------

(20)1795219	39 - 50
-------------	---------

Extreme climates and dry summer heat? You've got them beat in this advanced design! Solarys Air is a full summer boot that's both highly breathable and extensively ventilated. So the air gets to you, not the heat. Certified to CE - Cat. II - EN 13634, you can be sure of class-leading protection.



ERGONOMICS

- Zipper closure
- Elasticated inserts
- Micro-injection reinforcement

GENERAL FEATURES

- TPU gear shifter guard
- Reflective inserts
- Rubber sole with differentiated design
- Soft inserts

MAIN MATERIALS

- Breathable fabric
- Microfibre upper

SHOCK PERFORMANCE

- Certified boots to CE - Cat. II - EN 13634 Standard
- Rigid shin insert
- Rigid inserts on ankles
- TPU ankle reinforcement (External)

TEMPERATURE REGULATION

- Perforated upper
- Ventilated fabric

COLOR VERSIONS



001
black

GLOVES

- 42 UNIVERSE GORE-TEX® GLOVES
- 43 SCOUT 2 UNISEX GORE-TEX® GLOVES
- 44 SOLARYS LONG GORE-TEX® GLOVES
- 45 SOLARYS SHORT GORE-TEX® GLOVES
- 46 CORBIN UNISEX D-DRY® GLOVES
- 47 PLAZA 2 UNISEX D-DRY® GLOVES

UNIVERSE GORE-TEX® GLOVES + Gore grip technology

PART NUMBER SIZES

(20)1815889 XS - XXXL

A next-generation glove for the true enthusiast, packed with advancements: A unique dual cuff adjuster closure that uses back protector technology for new standards of comfort and safety. GORE-TEX® Gore grip technology that eliminates movement between the fabric layers to deliver outstanding grip, dexterity and feel for maximum control. Premium goatskin leather, complete protection and practical features like a visor wipe and touch screen capability complete an exceptional package that's perfect for three-season use, but also great year-round with heated grips, thanks to Gore grip's high conduction.



ERGONOMICS

Dual cuff adjuster system
Elasticated inserts
Elasticated fabric inserts
Pre-curved fingers
Tightening strap

GENERAL FEATURES

Dainese Smart Touch
Dainese Visor Wiper on left thumb
Reflective inserts
Soft inserts

COLOR VERSIONS

MAIN MATERIALS

Goatskin leather
Goatskin leather reinforcements on palm and fingers
Goatskin and Amica suede palm

SHOCK PERFORMANCE

Gloves certified to CE - Cat. II - EN 13594 Standard lev. 1
Polyurethane palm insert
Reinforced palm
Techno™ knuckle inserts

TEMPERATURE REGULATION

GORE-TEX® Gloves + Gore grip technology



691
black/black

SCOUT 2 UNISEX GORE-TEX® GLOVES

PART NUMBER SIZES

(20)1815893 XXXS - XXXL

The advanced evolution of a Dainese Road Touring classic, featuring Techno™ inserts on the knuckles and fingers, polyurethane palm inserts, a breathable waterproof GORE-TEX® membrane and Primaloft® insulation. Enhanced by practical touches like a visor wiper and touch screen capability, the Scout 2 is Certified to CE - Cat. II and EN 13594 level 1. So that wherever the road takes you, you can ride in comfort with total control.



ERGONOMICS

Adjustable cuff strap
Elasticated fabric
Elasticated fabric inserts
Pre-curved fingers
Tightening strap

GENERAL FEATURES

Dainese Smart Touch
Dainese Visor Wiper on left thumb
Reflective inserts
Soft inserts

MAIN MATERIALS

Goatskin leather reinforcements on palm and fingers
Amica suede palm

SHOCK PERFORMANCE

Gloves certified to CE - Cat. II - EN 13594 Standard lev. 1
Polyurethane palm insert
Reinforced palm
Techno™ knuckle and finger joint inserts

TEMPERATURE REGULATION

Breathable waterproof GORE-TEX® membrane
Thermal Primaloft® padding

COLOR VERSIONS



R17
black/fluo-yellow



V29
black/black

SOLARYS LONG GORE-TEX® GLOVES

PART NUMBER	SIZES	
(20)1815890	XS - XXXL	A light but protective long cuff glove. High-tenacity fabric and no insulation provide great feel and ensure you won't overheat. Semirigid inserts, multiple reinforcements and a breathable waterproof GORE-TEX® membrane keep you safe and comfortable all-year-round in warm climates and for three seasons in temperate zones. Performance you can rely on, with certification to CE - Cat. II and EN 13594 level 1.



ERGONOMICS

- Adjustable cuff strap
- Elasticated fabric
- Elasticated fabric inserts
- Pre-curved fingers
- Tightening strap

GENERAL FEATURES

- Dainese Smart Touch
- Dainese Visor Wiper on left thumb
- Reflective inserts
- Soft inserts

MAIN MATERIALS

- Breathable fabric
- Goatskin leather reinforcements on palm and fingers
- High-tenacity fabric
- Amica suede palm

SHOCK PERFORMANCE

- Gloves certified to CE - Cat. II - EN 13594 Standard lev. 1
- Polyurethane knuckle inserts
- Polyurethane palm insert
- Reinforced palm

TEMPERATURE REGULATION

- Breathable waterproof GORE-TEX® membrane

COLOR VERSIONS



691
black/black

SOLARYS SHORT GORE-TEX® GLOVES

PART NUMBER	SIZES	
(20)1815892	XS - XXXL	A short touring glove without insulation, making it suitable for the hottest conditions, but with a breathable waterproof GORE-TEX® membrane, so you're ready to weather the storms. Complete protection features, including polyurethane knuckle inserts, bring you safety and performance that's certified to CE - Cat. II and EN 13594 level 1.



ERGONOMICS

- Adjustable cuff strap
- Elasticated fabric
- Elasticated fabric inserts
- Pre-curved fingers

GENERAL FEATURES

- Dainese Smart Touch
- Dainese Visor Wiper on left thumb
- Reflective inserts
- Soft inserts

MAIN MATERIALS

- Breathable fabric
- Goatskin leather reinforcements on palm and fingers
- High-tenacity fabric
- Amica suede palm

SHOCK PERFORMANCE

- Gloves certified to CE - Cat. II - EN 13594 Standard lev. 1
- Polyurethane knuckle inserts
- Polyurethane palm insert
- Reinforced palm

TEMPERATURE REGULATION

- Breathable waterproof GORE-TEX® membrane

COLOR VERSIONS



691
black/black

CORBIN UNISEX D-DRY® GLOVES

PART NUMBER	SIZES	
(20)1815891	XXXX - XXXL	A three seasons glove with the superior feel of soft drum-dyed goatskin leather, plus the protection of polyurethane knuckle inserts and a D-Dry® waterproof membrane. CE Cat. II and EN 13594 certification put their seal on safety that won't cramp your style.



ERGONOMICS

- Elasticated inserts
- Pre-curved fingers
- Tightening strap

GENERAL FEATURES

- Dainese Smart Touch
- Soft inserts

MAIN MATERIALS

- Drum-dyed goatskin leather super soft palm
- Goatskin leather

SHOCK PERFORMANCE

- Gloves certified to CE - Cat. II - EN 13594 Standard lev. 1
- Polyurethane knuckle inserts
- Reinforced palm

TEMPERATURE REGULATION

- Waterproof D-Dry® membrane

COLOR VERSIONS



691
black/black

PLAZA 2 UNISEX D-DRY® GLOVES

PART NUMBER	SIZES	
(20)1815876	XXXX - XXXL	Here's a city glove that makes urban commuting a pleasure, whatever the weather, thanks to a waterproof D-Dry® membrane, wind-block insert and touch screen compatibility for navigation on the go.



ERGONOMICS

- Elasticated fabric
- Pre-curved fingers

GENERAL FEATURES

- Dainese Smart Touch
- Reflective inserts
- Soft inserts

SHOCK PERFORMANCE

- Reinforced palm

TEMPERATURE REGULATION

- Waterproof D-Dry® membrane
- Wind-block insert

COLOR VERSIONS



606
black/red



622
black/white



631
black/black

TECHNOLOGIES

50	PRIMALOFT®
50	GORE-TEX® Extended Comfort technology
50	GORE-TEX® Gloves + Gore grip technology
50	TECHNOTM TECHNOLOGY
51	GORE-TEX® MEMBRANE
51	D-DRY®
51	D-WP MATERIAL
51	TIGHTENING STRAP
52	CERTIFIED GLOVES
52	CERTIFIED FOOTWEAR
52	CERTIFIED BOOTS
52	REPLACEABLE SLIDER SYSTEM(RSS) 2.0 QUICK-RELEASE ELBOW SLIDER
53	TITANIUM & ALUMINUM SHOULDERS
53	TRIAxIAL
53	3D STONE
53	ELASTICATED INSERTS
54	MUGELLO FABRIC
54	D-SKIN 2.0 LEATHER
54	TUTU LEATHER

PRIMALOFT®



This thermal padding in high- quality microfibre offers elevated insulation properties, light weight and softness combined with low water absorption. The padding's elevated compression capacity permits application in a wide range of extreme sporting goods.

GORE-TEX® Extended Comfort technology



GORE-TEX® Extended Comfort technology has been created especially for footwear used in temperate or warmer conditions and/or in active pursuits. Its durably waterproof, non-insulated construction offers extreme breathability and optimum heat release, allowing perspiration to escape easily from inside while keeping any water out.

GORE-TEX® MEMBRANE



Garments produced with GORE-TEX® technology are tested both in the laboratory and in situations of actual use to ensure unique and long lasting waterproof, windproof and breathability performance in different conditions of use. GORE-TEX® engineered products maximize the product's performance and offer superior durability.

D-DRY®



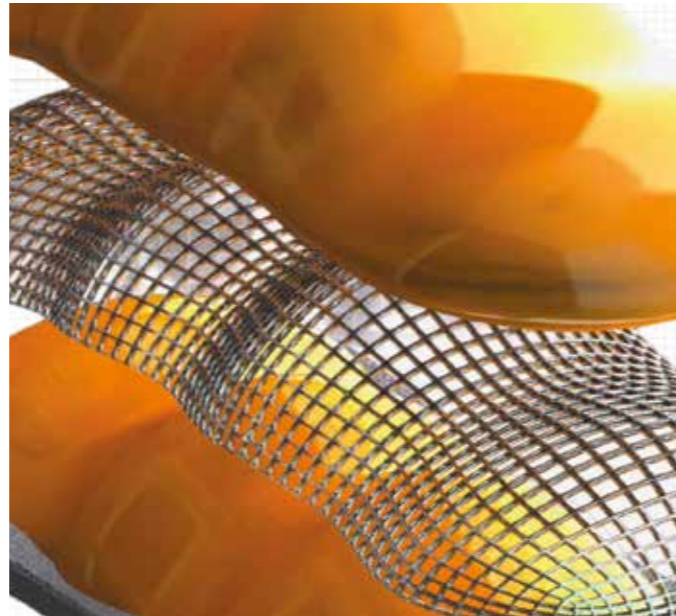
This hydrophilic polyurethane membrane applied to D-Dry® textile provides optimum impermeability to water and air. Elevated breathability ensures evaporation of perspiration under all weather conditions.

GORE-TEX® Gloves + Gore grip technology



Gore grip technology is a significant advance in glove construction, attaching the normally loose layers to each other so as to eliminate all movement between them. The result is optimum grip, feel and control, with better dexterity for handling zippers, visors, goggles, bags and more. Superior heat conduction from heated grips means you also benefit from improved cold-weather warmth. All while enjoying the usual high standards of wind and waterproofing for which GORE-TEX® is renowned.

TECHNO™ TECHNOLOGY



This exclusive patented Dainese technology used for the stiff inserts in gloves consists in the hot application of thermoformed inserts and a stainless steel net inside the fabric without stitching or layering that might otherwise weaken the glove's structure.

D-WP MATERIAL



D-WP is a material developed exclusively for footwear and ensures maximum comfort in any weather conditions. Products designed with D-WP technology have excellent waterproof and water-repellent properties, performance guaranteed by the specific structure of the material and by special surface treatments. D-WP textiles undergo rigorous testing to simulate the reaction of products to different weather conditions and to different stresses.

TIGHTENING STRAP



This strap on the glove's cuff prevents even partial undesired removal in case of fall while also keeping the stiff inserts in correct position in every situation.

CERTIFIED GLOVES



Certified glove according to CE - Class 2, which requires the product to pass rigorous tests carried out by external certification bodies, to evaluate compliance with the mechanical and chemical properties required of protective gloves for motorcycle riders. To obtain certification, a DAINESE glove must pass abrasion, impact, tear and cut resistance tests.

CERTIFIED FOOTWEAR



Shoe certified according to CE - Class 2, which requires the product to pass rigorous tests carried out by accredited bodies, to evaluate compliance with the chemical properties (e.g. upper pH) and mechanical properties (e.g. abrasion, compression, tear and cut resistance of the upper and bond strength between upper and outsole) required for protective footwear for motorcycle riders.

CERTIFIED BOOTS



Head-to-toe protection, always: nothing must be left to chance, above all when protecting delicate body parts like the feet, often subject to violent traumas. Dainese has developed footwear with an extremely high level of safety: confirmation of efficacy is provided by certification according to EN 13634 as protective footwear for professional motorcycle riders, obtained by passing tests such as abrasion, compression and cut resistance and bond strength between upper and outsole.

REPLACEABLE SLIDER SYSTEM(RSS) 2.0 QUICK-RELEASE ELBOW SLIDER



The completely redesigned second-generation RSS slider system brings substantial improvements in every area. The patented new design features a re-engineered slider profile and elbow construction, plus seamlessly integrated titanium armor for a substantial reduction in weight, improved fit and usability. What's more an innovative quick-release system makes slider replacement quick, simple and reliable.

TITANIUM & ALUMINUM SHOULDERS



Harnessing the many benefits of titanium and aluminum - from light weight to outstanding abrasion resistance and controlled sliding - this new-design shoulder armor benefits from seamless integration and increased coverage to provide outstanding protection. Advanced multilayer under-shell protection dissipates impact forces to CE 1621.1. Level 2.

TRIAxIAL



A new patented construction that advances the Dainese biaxial concept to form a continuous elasticated channel that can stretch in three directions, bringing unprecedented mobility as it follows the rider's movements in every direction. But you get more than exceptional comfort and agility in the saddle from this ingenious solution. By removing additional stitching exposed to the risk of abrasion, it also confers a significant improvement in safety.

3D STONE



An innovative high-tech fabric, Dainese 3D Stone is constructed from 100% high-tenacity nylon in a special chunky three-dimensional weave that creates micro air-pockets. These retard abrasion for outstanding mechanical strength, which a polyurethane resin finish takes to even higher levels, achieving abrasion resistance of up to 8 seconds when tested to EN 13595-2.

ELASTICATED INSERTS



Elasticated inserts positioned in the most strategic locations improve the garment's capacity for adaptation to the body's changing shape and movement during riding.

MUGELLO FABRIC



This fabric with good resistance to wear and tear is made in Micro Nylon and Elastomer fabric. This new stretch product guarantees elevated comfort thanks to its capacity to extend and then return to its original form, in this way offering the wearer greater freedom of movement. Protector treatment, developed through the application of nanotechnology to textile finishing, eliminates the need for garments to be ironed and permits the properties of oil- and water-repellence to be regained through air drying alone.

D-SKIN 2.0 LEATHER



A further level of excellence is achieved by the D-Tec Department with the D-Skin 2.0. Starting from strictly selected full-grain cowhide leather, characterized by long intact fibers, Dainese engineered and studied processes that enabled to reach a new point of reference in terms of abrasion, traction and tear resistance. Because of its softness and flexibility beyond comparison, the D-Skin 2.0 is extremely comfortable, although maintaining the same thickness of other cowhide leathers present in the collection. Special treatments with resins and silicon waxes improve the technical features of this excellent leather.

TUTU LEATHER



Cowhide leather developed and engineered with the protection of the rider in mind, ensuring high performance levels in terms of abrasion, tear, cutting and traction resistance. Flexibility and softness are guaranteed by the high quality of the carefully selected raw materials. State of the art leather finishing technologies provide the Tutu leather with extremely high levels of comfort while driving, whilst at the same time ensuring excellent water and oil repellent properties.

MAN																
EURO	ALPHA	USA	Chest		Waist		Hip		Height		Inseam		Arm		Neck	
42	XS	32	82	86	70	74	84	88	163	166	76	77	55	56	35,5	36,5
44	S	34	86	90	74	78	88	92	166	169	77	79	56	57	36,5	37,5
46	S	36	90	94	78	82	92	96	169	172	79	80	57	58	37,5	38,5
48	M	38	94	98	82	86	96	100	172	175	80	82	58	59	38,5	39,5
50	M	40	98	102	86	90	100	104	175	178	82	83	59	60	39,5	40,5
52	L	42	102	106	90	94	104	108	178	181	83	84	60	61	40,5	41,5
54	L	44	106	110	94	98	108	112	181	184	84	85	61	62	41,5	42,5
56	XL	46	110	114	98	102	112	116	184	187	85	86	62	63	42,5	43,5
58	XL	48	114	118	102	106	116	120	187	188	86	87	62	63	43,5	44,5
60	2XL	50	118	122	106	110	120	124	188	189	87	88	63	64	44,5	45,5
62	3XL	52	122	126	110	114	124	128	189	190	87	88	63	64	45,5	46,5
64	4XL	54	126	130	114	118	128	132	190	191	88	89	64	65	46,5	47,5

WOMEN																
EURO	ALPHA	USA	Chest		Breast		Waist		Hip		Height		Inseam		Arm	
38	XXS	0	72	76	76	80	56	60	82	86	157	160	73	75	51	52
40	XS	2	76	80	80	84	60	64	86	90	160	163	75	76	52	54
42	S	4	80	84	84	88	64	68	90	94	163	166	76	78	54	55
44	M	6	84	88	88	92	68	72	94	98	166	169	78	79	55	57
46	M	8	88	92	92	96	72	76	98	102	169	172	79	80	57	58
48	L	10	92	96	96	100	76	80	102	106	172	175	80	81	58	59
50	XL	12	96	100	100	104	80	84	106	110	175	177	81	82	59	60
52	XL	14	100	104	104	108	84	88	110	114	177	178	81	82	60	61
54	XXL	16	104	108	108	112	88	92	114	118	178	179	81	82	60	61

SPECIAL SIZING CHART FOR THE ARTICLES:

Carve Master 2 GORE-TEX® jacket + pants, D-Cyclone GORE-TEX® jacket + pants, Rain Master D-Dry® jacket, D-Blizzard D-Dry® jacket

EURO	ALPHA	USA	Chest		Waist		Hip		Height		Inseam		Arm		Neck	
42	XS	32	82	86	70	74	84	88	163	166	76	77	55	56	35,5	36
44	S	34	86	90	74	78	88	92	166	169	77	79	56	57	36,5	37
46	S	36	90	94	78	82	92	96	169	172	79	80	57	58	37,5	38
48	M	38	94	98	82	86	96	100	172	175	80	82	58	59	38,5	39
50	M	40	98	102	86	90	100	104	175	178	82	83	59	60	39,5	40
52	L	42	102	106	90	94	104	108	178	181	83	84	60	61	40,5	41
54	L	44	106	110	94	98	108	112	181	184	84	85	61	62	41,5	42
56	XL	46	110	117	98	105	112	119	184	185	85	88	62	63	42,5	44
58	XL	48	117	124	105	112	119	126	185	187	85	88	63	63,2	44,0	46
60	2XL	50	124	132	112	120	126	134	187	189	85	88	63,2	63,5	46,0	48
62	3XL	52	132	140	120	128	134	142	189	191	85	88	63,5	64	48,0	50

GLOVES

SIZES	6,5	7	7,5	8	8,5	9	9,5	10
Unisex	XXXS	XXS	XS	S	M	L	XL	XXL
Man				S	M	L	XL	XXL
Lady	S	M	L					

BOOTS

EU	36	37	38	39	40	41	42	43	44	45	46	47	48	49	50
UK	3,5	4,5	5	6	6,5	7,5	8	9	10	10,5	11,5	12	12,5	13,5	14,5
USA	4,5	5,5	6	7	7,5	8,5	9	10	11	11,5	12,5	13	13,5	14,5	15,5
Mm	240	245	250	255	265	270	275	280	285	290	300	305	310	315	320

#dainese
#dainesecrew



Dainese S.p.a.
Via dell'Artigianato, 35
36060 Molvena (VI), Italy

Branding, Marketing & Sales:
Via dell'Economia, 91
36100 - Vicenza (VI), Italy
Tel. (+39) 0444/224100
Fax (+39) 0444/964881

www.dainese.com
info@dainese.com

Company with Quality Management System
certified in accordance with the Standard
UNI EN ISO 9001:2000

Copyright © 2017 Dainese S.p.a.
Molvena (VI) Italy
Reproduction forbidden. All rights reserved.
Some of the products shown may differ
from the original ones.
Dainese reserves the right to change
or alter any of the products shown.

